



## Certificate of Analysis



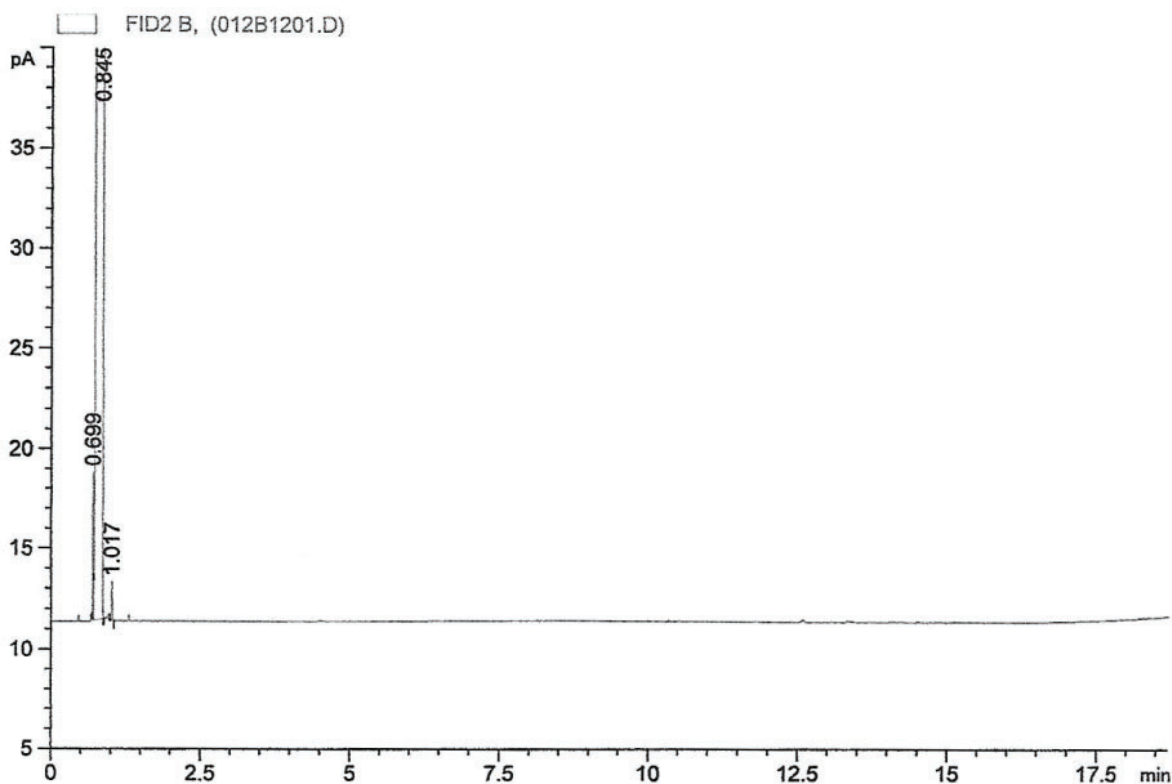
Material	Lot	Batch	Expiration date*
Anasorb 747	12830	14370	December, 2024

\* This expiration date is for sealed tubes. Tubes that are open-ended and made from this batch will have a shorter shelf life.

This batch of sorbent has met our QC requirements as outlined in SKC Procedure 4026.

Scott Marshall

Quality Assurance Manager



All peaks less than 1000 ng/g calculated as Toluene.