



## Certificate of Analysis

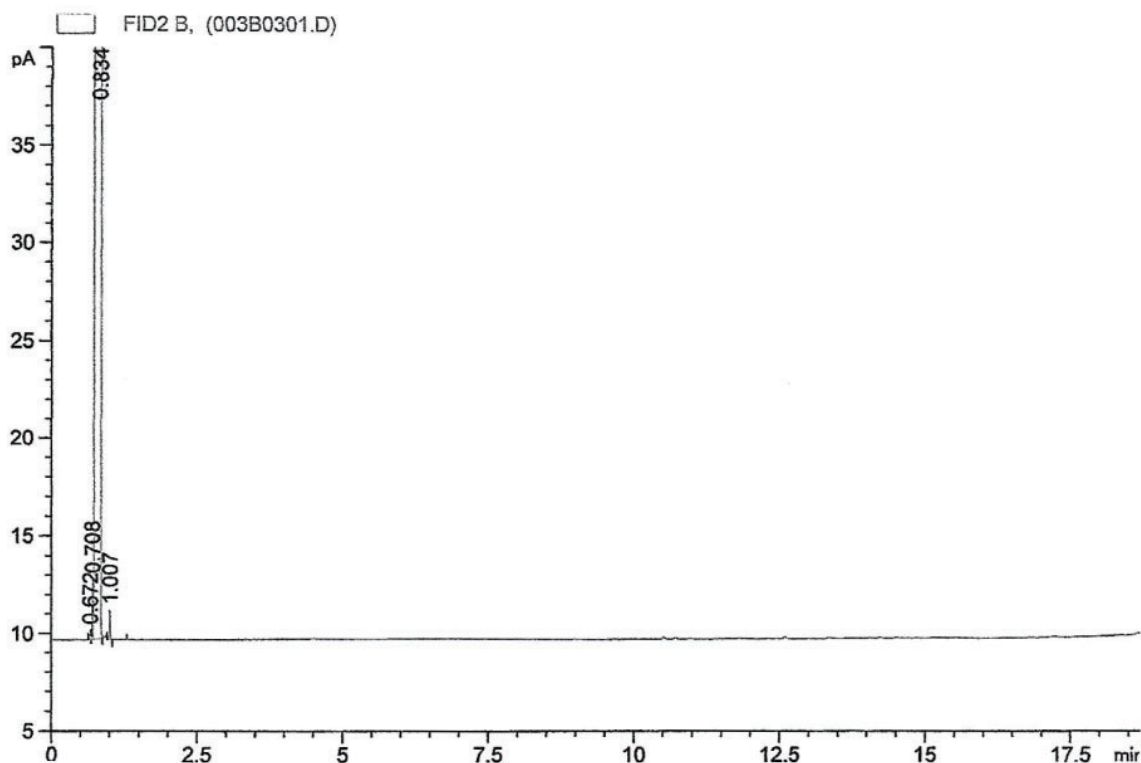


Material	Lot	Batch	Expiration date*
Charcoal 20/40 (Anasorb CSC)	2000	14342	November, 2024

\* This expiration date is for sealed tubes. Tubes that are open-ended and made from this batch will have a shorter shelf life.

This batch of sorbent has met our QC requirements as outlined in SKC Procedure 4034.

Scott Marshall  
Quality Assurance Manager



All peaks less than 1000 ng/g calculated as Toluene.