



Certificate of Analysis

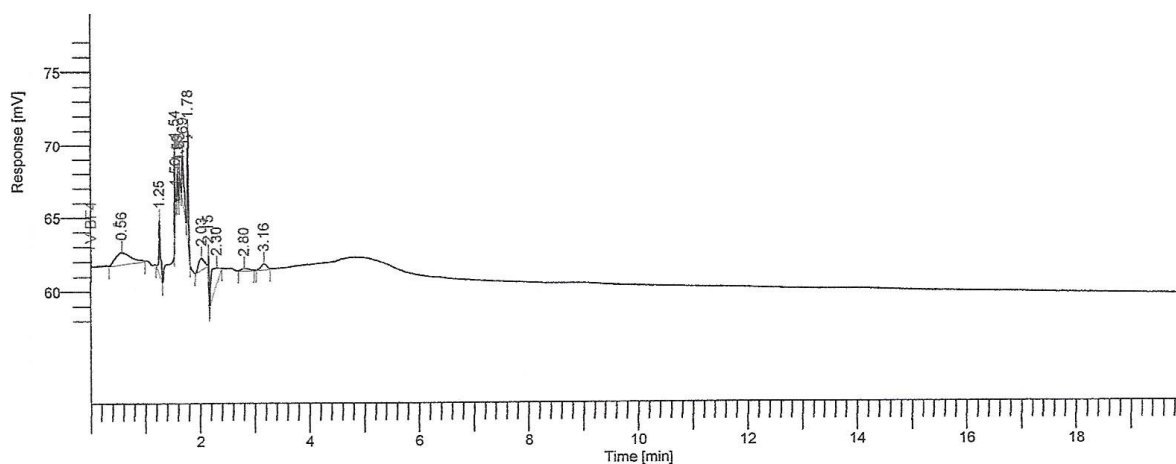


| Material | Lot | Batch | Expiration date* |
|----------------|-------|-------|------------------|
| Chromosorb 106 | 12980 | 14467 | March, 2025 |

* This expiration date is for sealed tubes. Tubes that are open-ended and made from this batch will have a shorter shelf life.

This batch of sorbent has met our QC requirements as outlined in SKC Procedure 4078.

Scott Marshall
QA Administrator



All peaks less than 5 $\mu\text{g/g}$ calculated as Naphthalene.