

# DataTrac Pro for AirChek TOUCH

## User Manual

Publication 1901 Rev 210311

### Introduction

#### Checking System Requirements

Ensure your PC meets minimum requirements for the DataTrac Pro Software.

<b>Operating System</b>	Microsoft® Windows® Vista®(sp2), 7, 8, 8.1, or 10
<b>Required Software</b>	Microsoft .NET Framework 4.5.1 and SKC USB Drivers <i>(included with installation)</i>
<b>Minimum Display Resolution</b>	1024 x 768
<b>Available Port</b>	USB 2.0A

#### Checking Hardware Requirements

- e-Cradle (Cat. No. 220-900\*)
- Cradle Power Supply (Single-Cat. No. 220-600\*, Multi-Cat. No. 220-700)
- USB 2.0A to Mini-B Cable (Cat. No. P71452\*)
- AirChek TOUCH Sample Pump (Cat. No. 220 Series)

\*These items are available in the DataTrac Pro Hardware Accessory Kit (Cat. No. 877-93).  
Items also can be purchased separately.

### Getting Started

#### Connecting AirChek TOUCH Pump to PC

The AirChek TOUCH Sample Pump communicates with a PC via e-Cradle, USB connection, and DataTrac Pro Software. *Hardware items are available in the DataTrac Pro Hardware Accessory Kit (Cat. No. 877-93). If chaining multiple cradles, a Multi Cradle Power Supply (Cat. No. 220-700, available separately) will be required. Purchase pump separately.*

1. Prepare/connect cradle as shown in Figure 1.

##### a. Single e-Cradle:

Ensure cradle is connected to a Single Cradle Power Supply (12 V DC). Insert Mini-B end of communication cable into port on back of e-Cradle.

Insert USB end of cable into USB 2.0A port on PC.

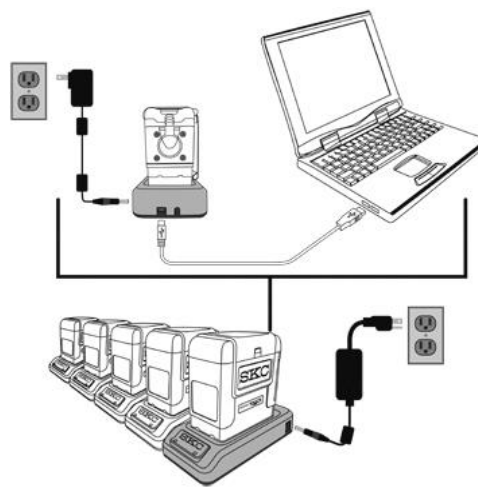
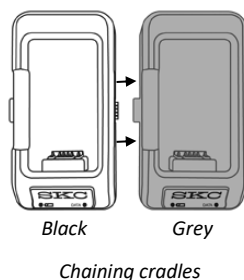


Figure 1. Communication Train

- b. e-Cradle chained with up to 5 Standard Cradles:** Ensure e-Cradle is connected to a Multi Cradle Power Supply (12 V DC, Cat. No. 220-700). Prepare e-Cradle as shown in Figure 1. Press succeeding cradles together as shown in Figure 1. Up to 4 Standard Cradles can be chained to the e-Cradle.
2. Align pump contacts with cradle contacts and insert pump in cradle. Repeat for each additional pump/cradle.
  3. Turn on each pump by pressing the recessed button on the side of each one.  
**Note: DataTrac Pro will only detect pumps that are powered on.**
  4. Download and install DataTrac Pro Software on PC. The right data LED on the cradle(s) will flash green to indicate communication with PC. **Note: Once communication between PC and pump(s) is established, pump(s) will be kept in a wakened state until one of the following occurs: pump(s) is turned off, pump(s) is removed from cradle(s), or DataTrac Pro Software is closed.**

### Downloading/Installing DataTrac Pro Software



**The DataTrac Pro Installer requires administrator privileges to install properly. DataTrac Pro must be installed separately under the Windows user account of each person who will use the software. The .NET Framework and SKC USB drivers are included in the DataTrac Pro Installer. If .NET Framework is not already installed on the PC, the installer will require the PC to be restarted and the installer will automatically launch once Windows starts again.**

**If no Internet connection is available,** contact SKC at 724-941-9701 (800-752-8472 U.S. only) to order Cat. No. P87793 (DataTrac Pro and User Manual on USB flash drive) and see Flash Drive Download.

#### Internet Download (requires Internet connection)



**Ensure pump(s) is connected and powered on prior to download.**

1. Browse [www.skinc.com/catalog/datatrac/DataTracProTouch/setup.exe](http://www.skinc.com/catalog/datatrac/DataTracProTouch/setup.exe).
2. Select Save to download the file to the PC.
3. Once downloaded, Run the setup file and follow wizard instructions.

When installation is complete, DataTrac Pro will launch automatically.

#### Flash Drive Download



**Ensure pump(s) is connected and powered on prior to download.**

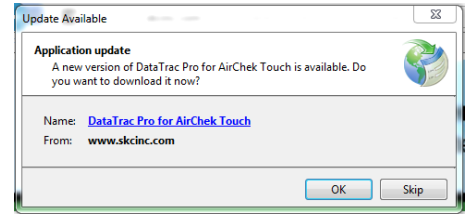
1. Insert flash drive into USB port on PC.
2. Browse files on flash drive.
3. Open the setup file.
4. Run the setup file and follow wizard instructions.

When installation is complete, DataTrac Pro will launch automatically.

## Updating DataTrac Pro Software

### Internet Download (requires Internet connection)

Launch DataTrac Pro Software. DataTrac Pro will scan automatically for available online updates. If an update is found, the user will be prompted to download/install or skip the update. Click OK to update.





### Flash Drive Download

Follow instructions in *Getting Started, Downloading/Installing DataTrac Pro Software, Flash Drive Download*.

## Uninstalling DataTrac Pro Software

1. Access the Windows Control Panel on the PC.
2. Select Programs (Programs and Features in Windows 7).
3. Select DataTrac Pro for AirChek TOUCH.
4. Click Uninstall.

## Using this Manual

This manual provides graphical guidance to the user. Areas on screens that require user action are highlighted  or . Corresponding text descriptions/details are highlighted in a matching color.

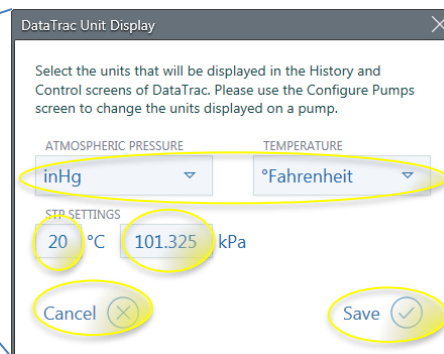
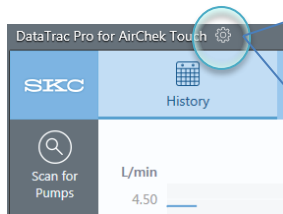
## Interacting with DataTrac Pro Software Screens

Click tabs and buttons with mouse to activate or select items. Click in boxes and type using keyboard to enter required information.

## Setting Display Preferences for DataTrac Pro

 Before using DataTrac Pro, access the DataTrac Unit Display box to select display preferences for DataTrac Pro and set STP criteria (if required).

**Open DataTrac Unit Display box.**



**Select DataTrac Pro display preferences for temperature and pressure.**

**Enter STP or other standard criteria for volume conversion.**

**Select Cancel or Save when finished.**

Figure 2. DataTrac Pro Unit Display Box

# Using DataTrac Pro Software

## Downloading/Managing Sampling History

### History Tab

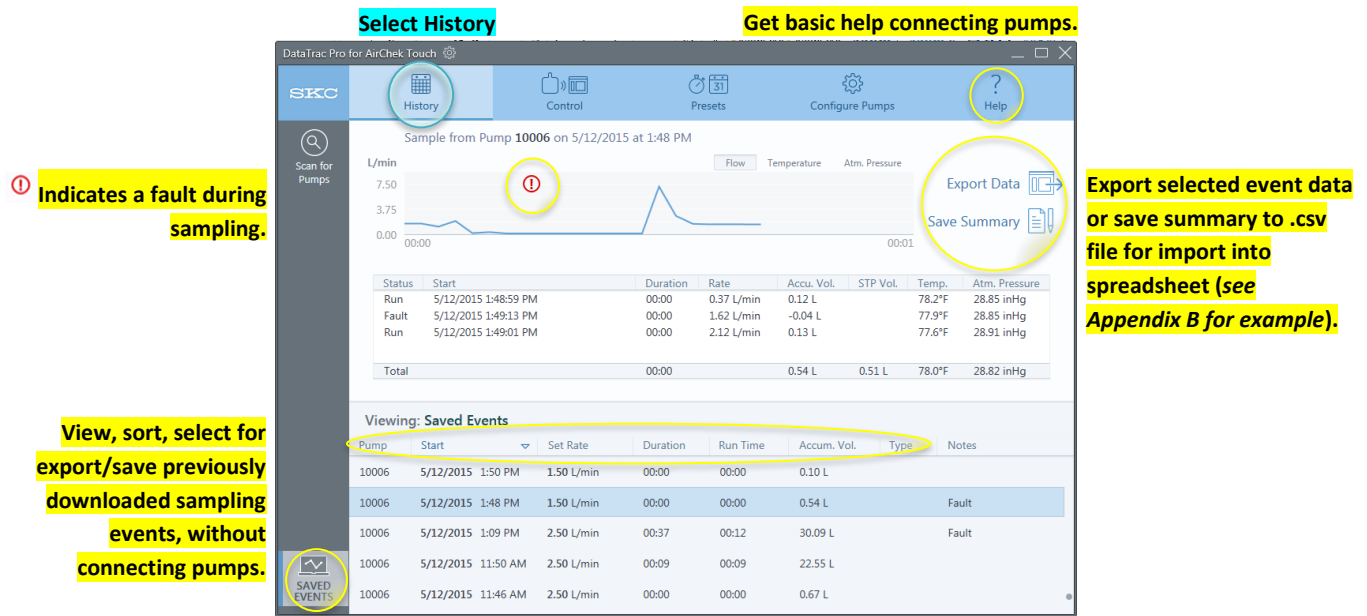


Figure 3. History Tab Prior to Pump Connection

## Detecting Pumps

Once launched, DataTrac Pro scans for pumps in cradles connected by USB to the PC. Detected pumps display as an icon and serial number in the Pump Display Bar. If pumps do not appear automatically in the bar, click Scan for Pumps. **Note:** Pumps must be powered **on** to be detected by DataTrac Pro.

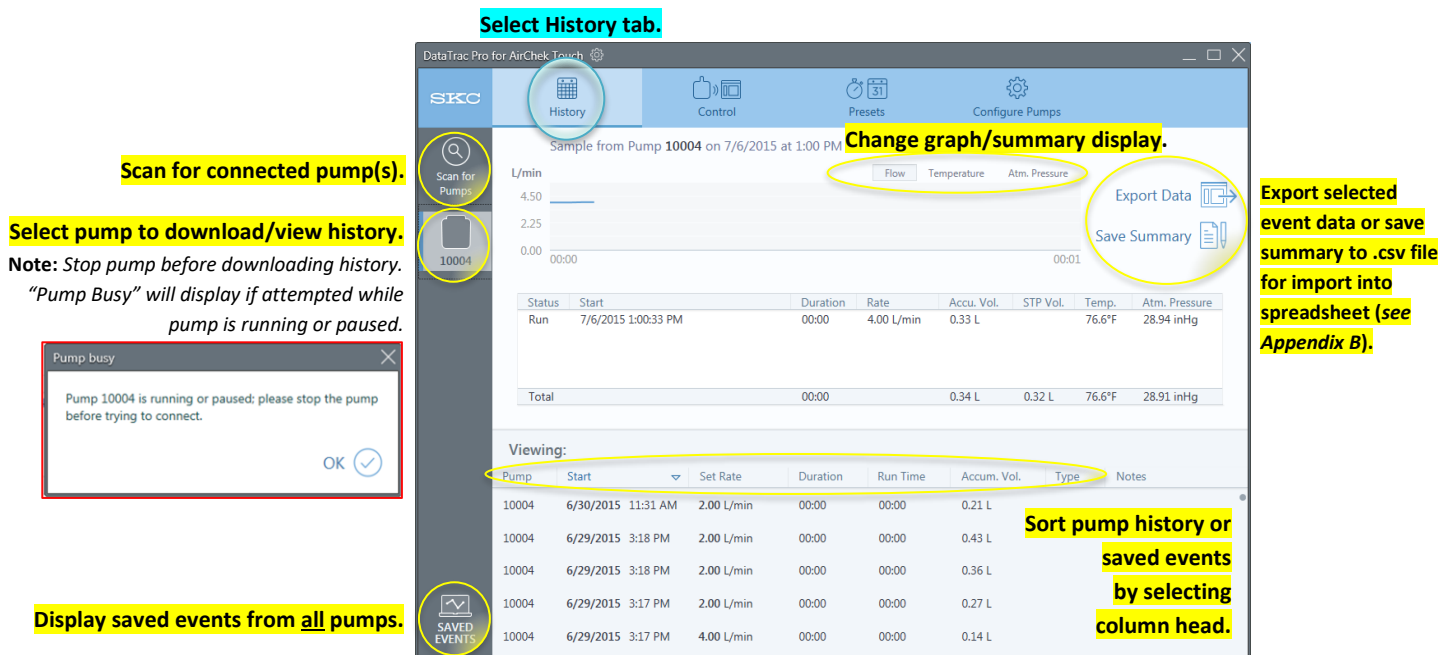


Figure 4. History Tab Displaying Connected Pumps

## Controlling the Pump

### Control Tab

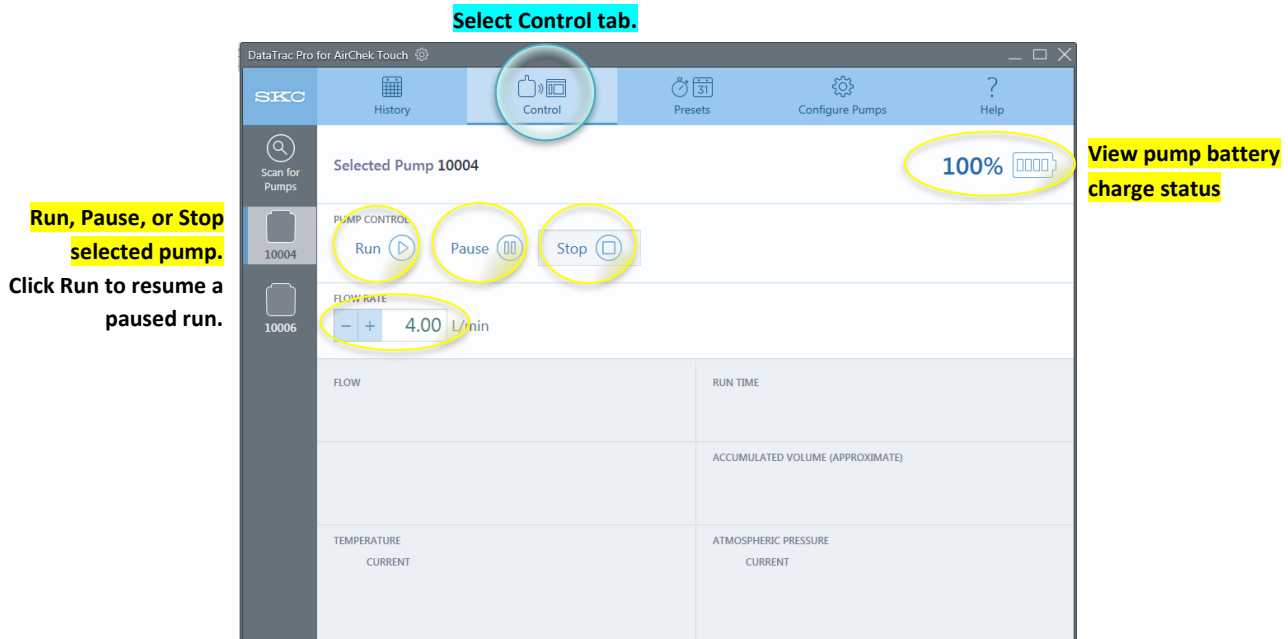


Figure 5. Display Before Run is Clicked

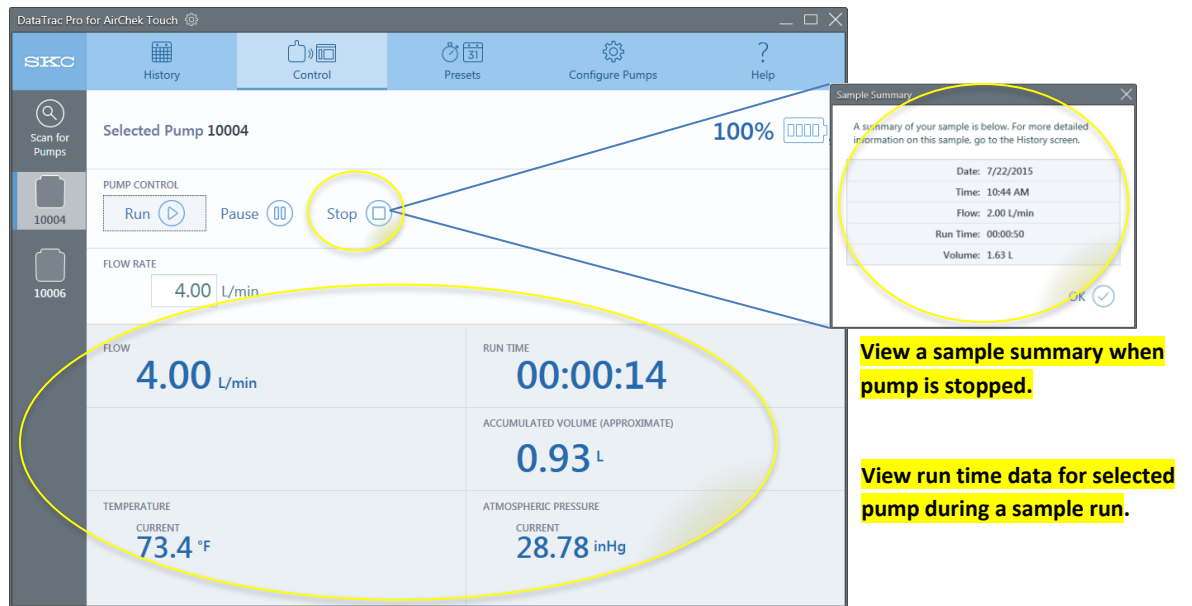


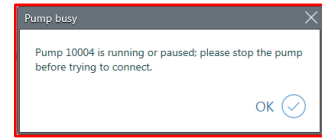
Figure 6. Display After Run is Clicked

## Programming and Uploading Sample Presets

### Presets Tab

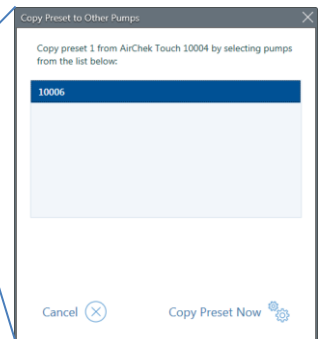


Stop pump before programming presets. “Pump busy” will display if attempted while pump is running or in pause.



Select Presets tab.

Upload preset to selected pump(s).



Save (upload) or Cancel preset.

Select/enter start time\*.

Select timing (run type), change/enter number of cycles†, total duration†, length of time pump samples, and length of time pump pauses during each cycle

Figure 7. Examples of Continuous Run Preset and Intermittent Run Preset

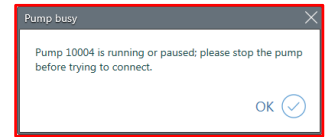
†Cycles and Duration values are calculated based on the numbers entered.  
Changing one value will cause the other value to change.

## Configuring Pumps/Updating Firmware

### Configure Pumps Tab

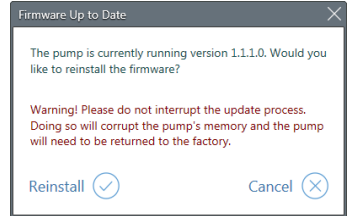
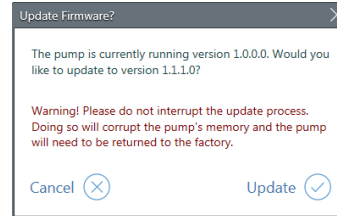


**Stop pump before configuring/updating. “Pump busy” will display if attempted while pump is running or in pause.**



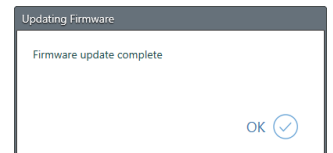
### Updating Firmware

- Before updating firmware, ensure pump is seated properly in cradle, cords are inserted fully, and PC is running from AC power.
- Click the Update Firmware button. Message boxes will appear for either an update or reinstallation of the latest update, depending upon firmware version detected in the pump. Click update or reinstall to initiate installation.



**Do not remove pump from cradle during firmware update process. Interruptions to the firmware update will require the pump to be sent to SKC for service.**

- Two separate updates (screens/firmware) may need to be installed depending on the currently installed firmware version. This process completes automatically within five minutes. The pump may reboot twice during the update process. Wait until the Firmware Update Complete message box opens in DataTrac Pro before removing pump from cradle. Date/time update automatically to PC date/time.



### Select Configure Pumps tab.

**DataTrac Pro for AirChek TOUCH**

**Pump 10006**

MANUFACTURING DATE: 6/11/2015  
LIFETIME VOL. SAMPLED: 1,189 L

HISTORY RECORDS: 3051  
FIRMWARE VERSION: 1.0.1.0

Update Firmware

Update Date & Time

PUMP SETTINGS

UNITS & DATA

FLOW & VOLUME

L/min & Liters

ATMOSPHERIC PRESSURE: mbar

TEMPERATURE: °Fahrenheit

STP SETTINGS

20 °C 101.325 kPa

SCREEN

DIM: Off

AUTO LOCK: Off

SECURITY

SECURE LOCK: Off

PASSWORD: 1 1 1 1

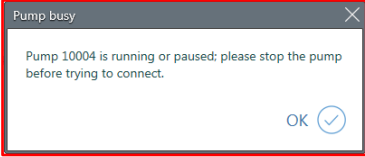
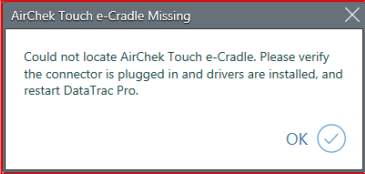
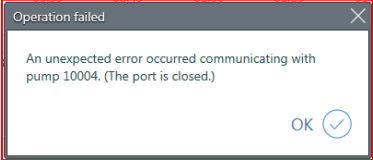
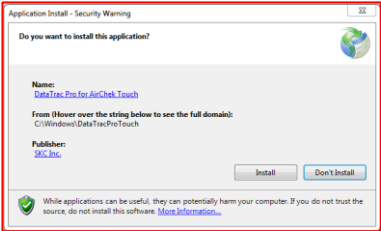
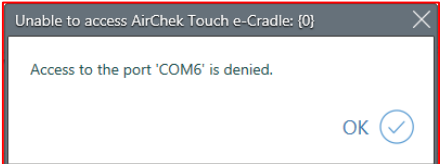
Copy Settings to Other Pumps

Save Settings to Pump

Cancel

Figure 8. Configure Pumps Tab

## Troubleshooting

Issue	Possible Solutions
<p>My pump/cradle will not communicate with my PC.</p>	<ol style="list-style-type: none"> <li>1. Ensure cradle is plugged into USB port on PC (Figure 1).</li> <li>2. Ensure CalChek Communication Cable is removed from cradle.</li> <li>3. Check that pump is seated firmly in cradle and <b>powered on</b>.</li> <li>4. Ensure cradle is connected to 12 V DC power supply (Figure 1).</li> </ol>
<p>I keep getting a Pump busy box when I click in the Pump Display Bar or the History, Presets, and Configure Pumps tabs.</p>  <p>The screenshot shows a dialog box titled 'Pump busy' with a close button (X) in the top right corner. The text inside reads: 'Pump 10004 is running or paused; please stop the pump before trying to connect.' At the bottom right, there is an 'OK' button with a checkmark icon.</p>	<p>The pump is running or in pause. Stop the pump to access History, Presets, and Configure Pumps functions.</p>
<p>This AirChek TOUCH e-Cradle Missing box popped up when I was installing DataTrac Pro.</p>  <p>The screenshot shows a dialog box titled 'AirChek Touch e-Cradle Missing' with a close button (X) in the top right corner. The text inside reads: 'Could not locate AirChek Touch e-Cradle. Please verify the connector is plugged in and drivers are installed, and restart DataTrac Pro.' At the bottom right, there is an 'OK' button with a checkmark icon.</p>	<ol style="list-style-type: none"> <li>1. Check all USB and power connections.</li> <li>2. Reinstall DataTrac Pro Software.</li> </ol>
<p>This Operation failed box appeared on my PC.</p>  <p>The screenshot shows a dialog box titled 'Operation failed' with a close button (X) in the top right corner. The text inside reads: 'An unexpected error occurred communicating with pump 10004. (The port is closed.)' At the bottom right, there is an 'OK' button with a checkmark icon.</p>	<ol style="list-style-type: none"> <li>1. Check all USB and power connections.</li> <li>2. Close DataTrac Pro Software and relaunch.</li> </ol>
<p>This Security Warning appears during installation of DataTrac Pro Software.</p>  <p>The screenshot shows a 'Security Warning' dialog box titled 'Application Install - Security Warning'. It asks 'Do you want to install this application?'. The application name is 'DataTrac Pro for AirChek Touch'. It shows the file path 'C:\Windows\DataTracProTouch' and the publisher 'SAC, Inc.'. There are 'Install' and 'Don't Install' buttons. At the bottom, there is a green shield icon and a note: 'While applications can be useful, they can potentially harm your computer. If you do not trust the source, do not install this software. More information...'.</p>	<p>Note the green shield displayed at the bottom of the box. This indicates that it is safe to proceed with installing DataTrac Pro.</p>
<p>The following COM port error is displaying after I launch DataTrac Pro.</p>  <p>The screenshot shows a dialog box titled 'Unable to access AirChek Touch e-Cradle: [0]' with a close button (X) in the top right corner. The text inside reads: 'Access to the port 'COM6' is denied.' At the bottom right, there is an 'OK' button with a checkmark icon.</p>	<p>Unplug USB cable from PC and plug into a different USB port (if available). If not, replug into USB port and relaunch DataTrac Pro.</p>



## Software Notes

Version	What's New
<b>V.1.0.4</b>	-Issue version
<b>V.1.1.1</b>	-Removed option to cancel firmware update while in progress -Screen/firmware update is now one button on Configure Pumps tab -Date/time automatically update immediately after firmware update -Added History Records number and Erase History button to Configure Pumps tab
<b>V.1.1.2</b>	-Tweak temp/pressure compensation while manually calibrating with more than 5000 ft altitude -Tweak to initial motor speed after fault recovery
<b>V.1.1.3</b>	-Updated battery thresholds to optimize low power behavior from battery pack -If insufficient power is available to power the pump after a reset, pump goes to sleep immediately and blinks red LEDs three times. -Changes battery indicator to red when sample is stopped due to critical battery condition
<b>V.1.1.4</b>	-Bug fix for temperature and pressure averages in samples longer than 18 hours -Fixes corrupted long history logs when pump is manually reset or the firmware is updated
<b>V.1.1.8</b>	-Updated CalChk screens.

## Appendices

### Appendix A

#### SKC End-user License Agreement

**NOTICE TO USER:** This is a contract. By installing this software, you accept all the terms and conditions of this End-user License Agreement (EULA). If you do not agree with the terms and conditions shown below, do not install the software.

**GENERAL TERMS AND CONDITIONS** - This software (the "SOFTWARE") is owned by SKC Inc. ("SKC") and protected by copyright law. SKC gives the user (the "USER") certain rights to use the SOFTWARE after acceptance of the terms and conditions of this EULA.

The USER may:

- Use the SOFTWARE on more than one computer.

The USER may not:

- Use the SOFTWARE with improperly licensed SOFTWARE. The SOFTWARE must be supported by properly licensed SOFTWARE.
- Reverse engineer, decompile, disassemble, modify, translate, make any attempt to discover the source code, or otherwise plagiarize the SOFTWARE.

**LIMITED WARRANTY** - SKC does not warrant that the SOFTWARE will meet your requirements or that the SOFTWARE is error-free.

THE WARRANTY IS EXCLUSIVE AND IN LIEU OF ALL OTHER WARRANTIES, WHETHER EXPRESS OR IMPLIED, INCLUDING IMPLIED WARRANTIES OF MERCHANTABILITY, FITNESS FOR A PARTICULAR PURPOSE AND NON-INFRINGEMENT. THIS WARRANTY GIVES YOU SPECIFIC LEGAL RIGHTS. YOU MAY HAVE OTHER RIGHTS WHICH VARY FROM STATE TO STATE.

**DISCLAIMER OF DAMAGES** - USER SHALL NOT BE ENTITLED TO RECOVER FROM SKC INC. ANY CONSEQUENTIAL DAMAGES, DAMAGES FROM USE OF THE SOFTWARE WITH IMPROPERLY LICENSED SOFTWARE, DAMAGES TO PROPERTY, DAMAGES FOR LOSS OF USE, LOSS OF TIME, LOSS OF PROFITS, INCOME, DATA OR OTHER INCIDENTAL DAMAGES ARISING OUT OF THE USE OR INABILITY TO USE THE SOFTWARE. SOME STATES DO NOT ALLOW THE LIMITATION OR EXCLUSION OF LIABILITY FOR INCIDENTAL OR CONSEQUENTIAL DAMAGES TO THE ABOVE LIMITATION OR EXCLUSION MAY NOT APPLY TO YOU.

#### EXPORT CONTROLS

None of the Software or underlying information or technology may be downloaded or otherwise exported or re-exported (i) into (or to a national of) any country to which the U.S. has embargoed goods; or (ii) to anyone on the U.S. Treasury Department's list of Specially Designated Nationals or the U.S. Commerce Department's Table of Deny Orders. By downloading or using the Software, you are agreeing to the foregoing and you are representing and warranting that you are not located in, under control of, or a national or resident of any such country or on any such list.

**U.S. GOVERNMENT END USERS** - This EULA conveys only restricted rights, and its use, disclosure, and duplication are subject to FAR 52.227-7013(c)(1)(ii).

**GOVERNING LAW AND GENERAL PROVISIONS** - This EULA shall be construed under the laws of the Commonwealth of Pennsylvania which shall be deemed to be the situs of the EULA with SKC. This EULA will not be governed by the United Nations Convention or Contracts for the International Sale of Goods, the application of which is expressly excluded. If any part of this EULA is found void and unenforceable, it will not affect the validity of the balance of the EULA, which shall remain valid and enforceable according to its terms. The USER agrees that the SOFTWARE will not be shipped, transferred or exported into any country or used in any manner prohibited by the U.S. Export Administration Act or any other export laws, restrictions or regulations. No other right is given by SKC in conjunction with this EULA.

## Appendix B

### Exported Sample Event Data Imported into Microsoft Excel

AirChek Touch 10004 Sample 201506171147 for DataTrac Pro OI Appendix B.csv - Microsoft Excel

	A	B	C	D	E	F	G	H	I	J	K
	Timestamp	Elapsed Time	Run State	Actual Flow (L/min)	Accumulated Volume (L)	STP Volume (L)	Temperature (°F)	Atmospheric Pressure (inHg)	Battery Voltage (V)	Flow Faults	
1	6/17/2015 11:47	0:00:02	Run	2.07	0.069	0.066	74	29.03	8.389	0	
2	6/17/2015 11:47	0:00:04	Run	2.004	0.135	0.129	74	29.03	8.392	0	
3	6/17/2015 11:48	0:00:06	Run	2.005	0.202	0.194	74	29.03	8.385	0	
4	6/17/2015 11:48	0:00:08	Run	1.998	0.269	0.258	74	29.03	8.392	0	
5	6/17/2015 11:48	0:00:10	Run	2	0.335	0.321	73.9	29.03	8.362	0	
6	6/17/2015 11:48	0:00:12	Run	2.005	0.402	0.386	73.9	29.03	8.377	0	
7	6/17/2015 11:48	0:00:14	Run	1.998	0.469	0.45	73.9	29	8.389	0	
8	6/17/2015 11:48	0:00:16	Run	1.999	0.536	0.514	73.9	29.03	8.381	0	
9	6/17/2015 11:48	0:00:18	Run	2.004	0.602	0.578	73.9	29.03	8.392	0	
10	6/17/2015 11:48	0:00:20	Run	2.003	0.669	0.642	73.9	29.03	8.392	0	
11	6/17/2015 11:48	0:00:22	Run	1.998	0.736	0.706	73.9	29.03	8.381	0	
12	6/17/2015 11:48	0:00:24	Run	2.003	0.803	0.77	73.9	29.03	8.381	0	
13	6/17/2015 11:48	0:00:26	Run	2.001	0.869	0.833	73.9	29	8.396	0	
14	6/17/2015 11:48	0:00:28	Run	0.998	0.902	0.865	73.9	29.03	8.37	0	
15	6/17/2015 11:48	0:00:30	Run	0	0.902	0.865	73.9	29.03	8.301	0	
16	6/17/2015 11:48	0:00:32	Run	0	0.902	0.865	73.9	29.03	8.339	0	
17	6/17/2015 11:48	0:00:34	Run	0	0.902	0.865	73.9	29.03	8.335	0	
18	6/17/2015 11:48	0:00:36	Run	0	0.902	0.865	73.9	29.03	8.324	0	
19	6/17/2015 11:48	0:00:38	Run	0	0.902	0.865	73.9	29.03	8.332	1	
20	6/17/2015 11:48	0:00:40	Run	0	0.902	0.865	73.9	29.03	8.389	1	
21	6/17/2015 11:48	0:00:42	Run	0	0.902	0.865	73.9	29.03	8.392	1	
22	6/17/2015 11:48	0:00:44	Run	0	0.902	0.865	73.9	29.03	8.392	1	
23	6/17/2015 11:48	0:00:46	Run	0	0.902	0.865	73.9	29.03	8.396	1	
24	6/17/2015 11:48	0:00:48	Run	0	0.902	0.865	73.9	29.03	8.396	1	
25	6/17/2015 11:48	0:00:50	Run	0	0.902	0.865	73.9	29.03	8.381	1	
26	6/17/2015 11:48	0:00:52	Run	0	0.902	0.865	73.9	29.03	8.392	1	
27	6/17/2015 11:48	0:00:53	Run	6.922	1.018	0.977	73.9	29.03	8.396	1	
28	6/17/2015 11:48	0:00:54	Run	0	1.018	0.975	73.9	28.97	8.339	1	
29	6/17/2015 11:48	0:00:56	Run	0	1.018	0.976	73.9	29	8.385	1	
30	6/17/2015 11:48	0:00:58	Run	0	1.018	0.977	73.9	29.03	8.271	1	
31	6/17/2015 11:48	0:01:00	Run	0	1.018	0.977	73.9	29.03	8.29	1	
32	6/17/2015 11:48	0:01:02	Run	0	1.018	0.977	73.9	29.03	8.267	1	
33	6/17/2015 11:48	0:01:04	Run	0	1.018	0.977	73.9	29.03	8.263	2	
34	6/17/2015 11:49	0:01:06	Run	0	1.018	0.977	73.9	29.03	8.392	2	
35	6/17/2015 11:49	0:01:08	Run	0	1.018	0.977	73.9	29.03	8.392	2	
36	6/17/2015 11:49	0:01:08	Run	0	1.018	0.977	73.9	29.03	8.392	2	

AirChek Touch 10004 Sample 2015



863 Valley View Road, Eighty Four, PA 15330 USA • 724-941-9701 • skcinc.com